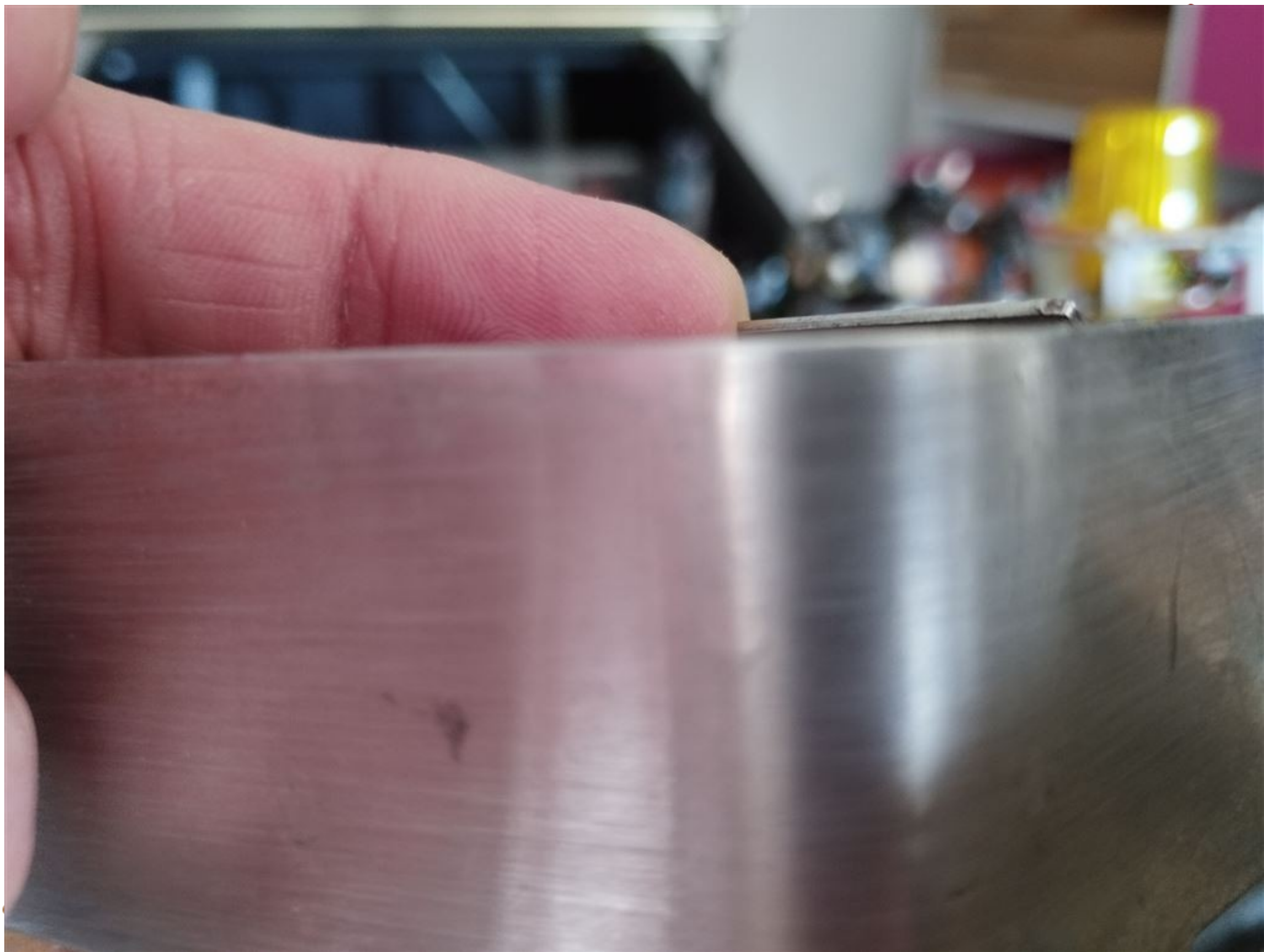


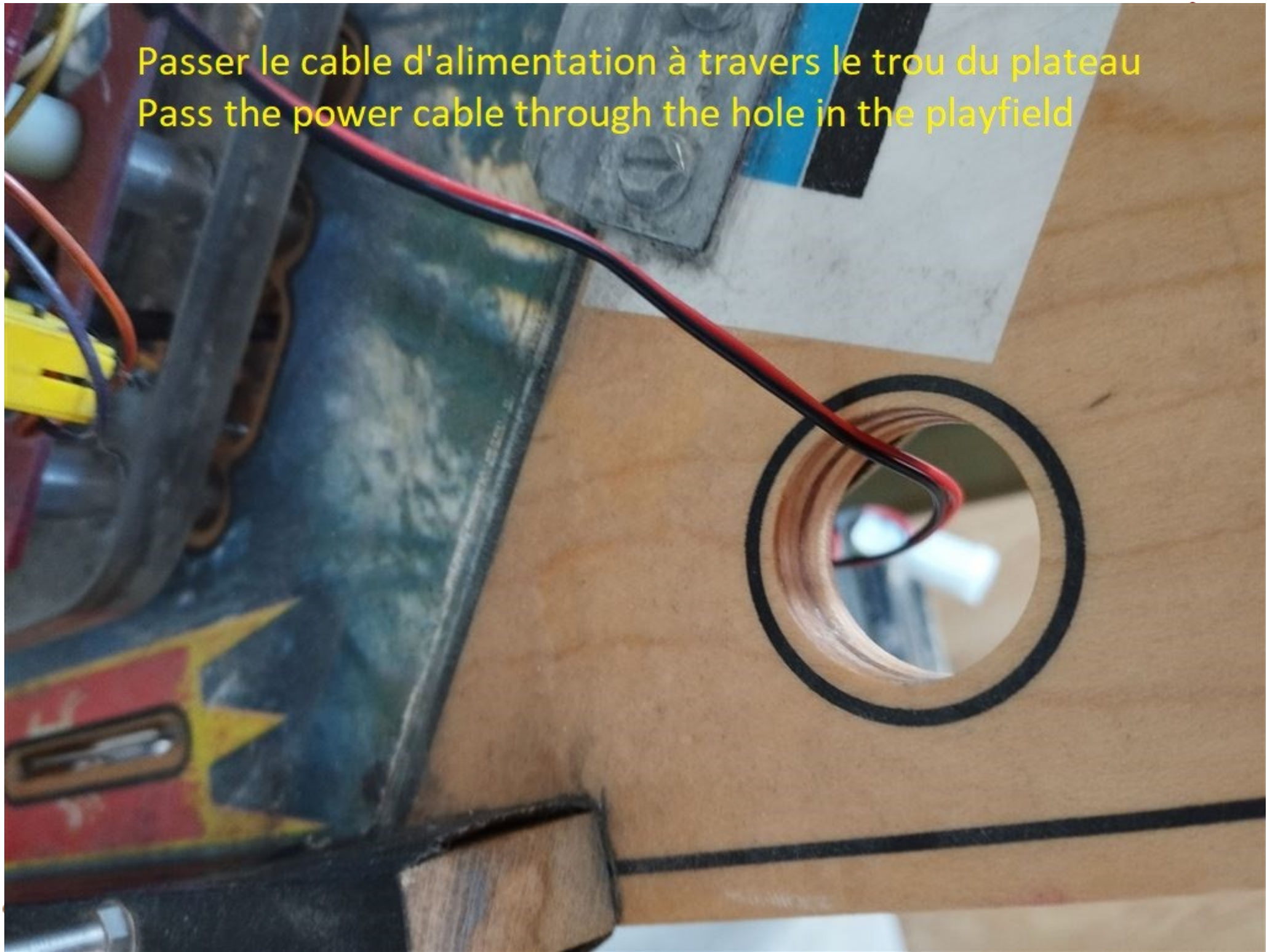
Rabattre cette piece métallique au même niveau de hauteur de l'equerre qui stoppe les billes.

Fold this metal piece to the same height level as the bracket which stops the balls.

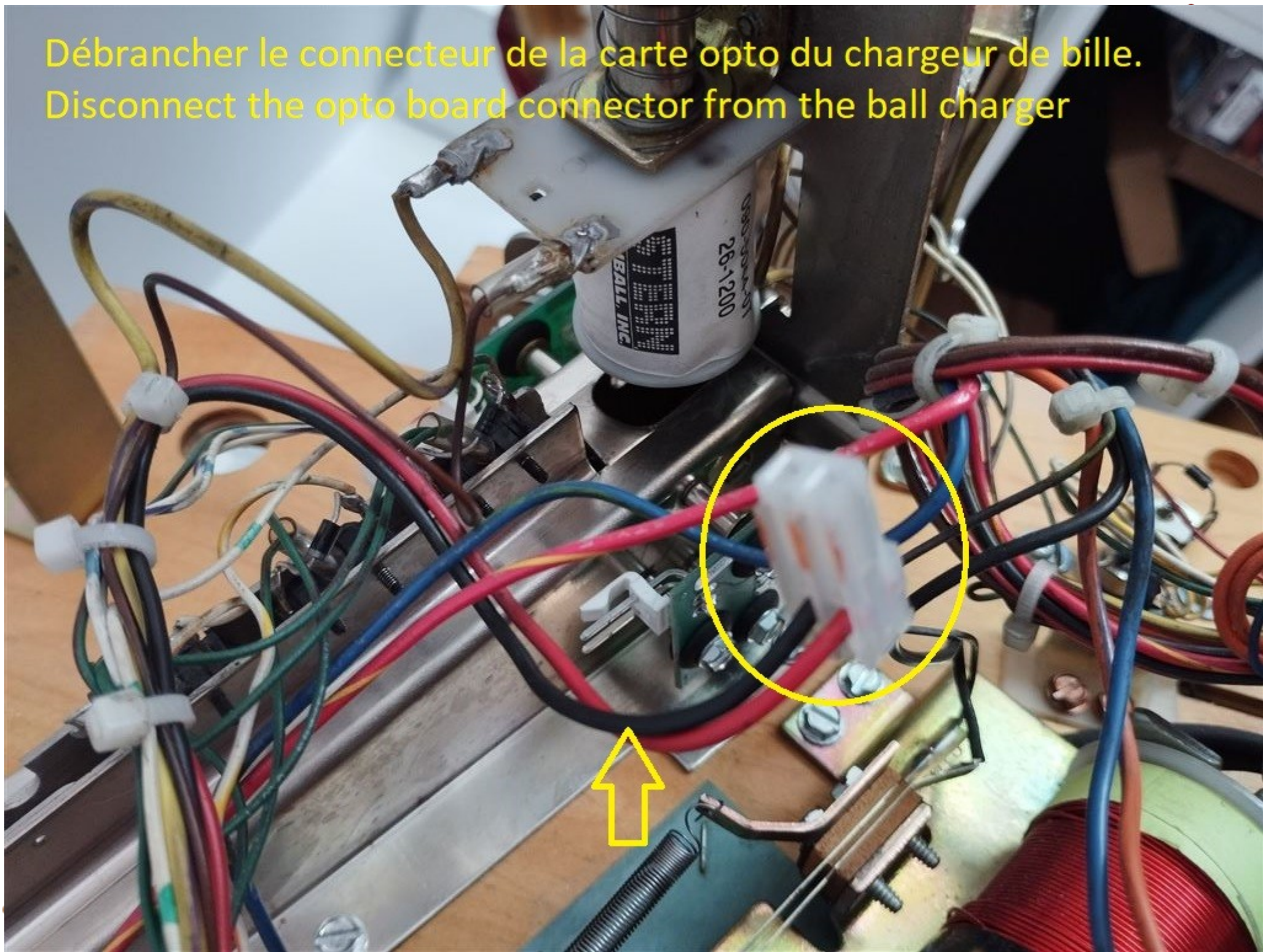




Passer le cable d'alimentation à travers le trou du plateau
Pass the power cable through the hole in the playfield

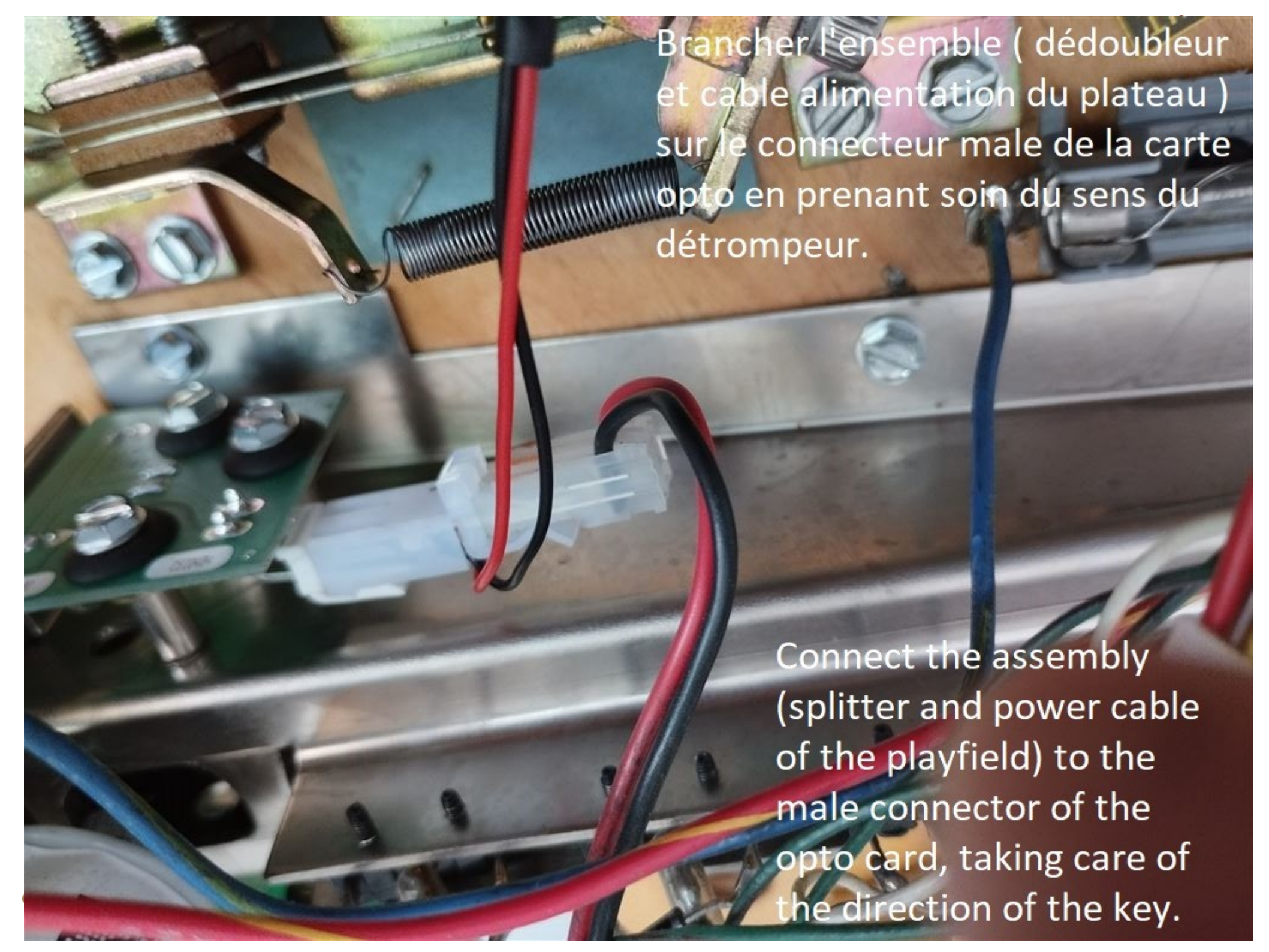


Débrancher le connecteur de la carte opto du chargeur de bille.
Disconnect the opto board connector from the ball charger



Brancher le dédoubleur du câble d'alimentation de l'apron au connecteur femelle précédemment débranché, il y a un détrompeur mais s'assurer que la couleur des fils correspondent bien.

Connect the apron power cable splitter to the previously disconnected female connector, there is a key but make sure that the color of the wires matches.

A close-up photograph of an electronic assembly. A white plastic male connector is mounted on a metal plate. Two red wires and one black wire are plugged into the connector. To the left, a green printed circuit board (PCB) is visible, featuring several black components and a silver potentiometer. A metal spring is attached to the assembly. The background shows a wooden surface and other metal components.

Brancher l'ensemble (dédoubleur
et cable alimentation du plateau)
sur le connecteur male de la carte
opto en prenant soin du sens du
détrompeur.

Connect the assembly
(splitter and power cable
of the playfield) to the
male connector of the
opto card, taking care of
the direction of the key.

Faire cheminer le cable et le fixer à l'aide des colliers sur le cable existant.

Route the cable and secure it using the clamps on the existing cable.

